

MDB SERIES

Dehumidifying Dryers



MDB Series Dehumidifying Dryers have been designed around improved serviceability and increased energy efficiency. With material processing rates between 50-450 lbs/hr (22-205 kgs/hr), the dual blower, desiccant bed system with electric bed switching valve technology provides an easy to operate platform for virtually any drying application.

Designed around the new DryPro touchscreen controller, the MDB Series dryer gives users a level of interface and information rarely seen. Processes are clearly displayed with color coded functions, operating parameters are clearly shown and material throughputs can easily be seen.

The MDB Dryer with DryPro controller can be expanded to control up to three drying hoppers with modular components on one compact platform. The MDB series can be used as a stand-alone unit, or can be configured as part of a cart system with or without conveying options to service several process machines.

Features

Standard Features

- Drying temperature range 140° to 400°F (71° to 204°C)
- Throughput of 50-450 lbs/hr (22-205 kgs/hr)
- Dual desiccant bed design
- DryPro Touch Screen Controller
- -40°F Dew Point
- Electric bed-switching valves
- Dual regenerate blower design
- Incoloy heaters
- Solid state relay on process heater
- Sequence shutdown switch
- Easy access removable panels designed for serviceability
- Portable floor-mount design
- 240-480/3/60 Supply Voltage

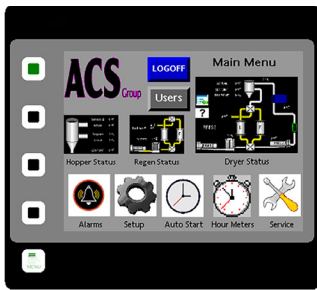
Optional Features

- Closed-loop regeneration circuit
- Pre-cooler for low temperature applications
- Aftercooler for high temperature applications
- Dryer hose insulation
- Process heaters can be mounted directly onto the drying hoppers
- UL Labeling
- CE Certification
- Other supply voltages available

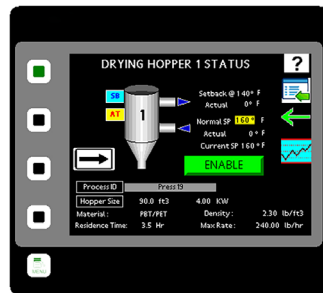
Advanced Controller

Take Control of Your Process with DryPro

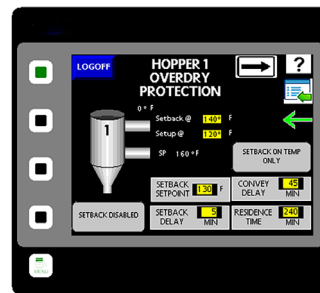
- Temperature setback to prevent over drying
- Color coded diagnostics and functions
- Temperature Graphs
- Simple icon-driven flow schematics change color as conditions change
- Active visual indication of process parameters and process settings
- Estimated throughput based on input of process parameters
- Graphing and trending of:
 - Process temperature
 - Regeneration temperature
 - Process dew point
- Preventative maintenance hour meter for critical components/processes
- Seven day timer for automatic startup
- Regeneration on time with bed break over-ride to save energy
- Dirty filter indicator
- Dew point bed switching



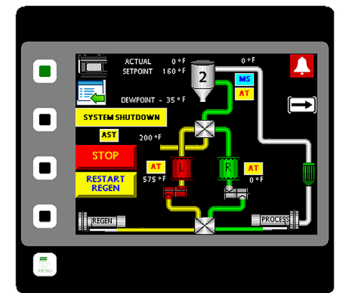
Main Menu



Drying Hopper Status



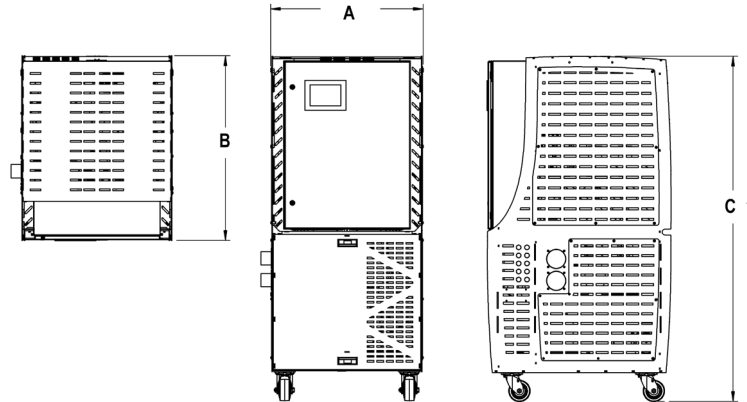
Hopper OverDry Protection



Dryer Status

Dimensions

Model	A	B	C	Shipping Wt.
MDB 85	27 in (686mm)	27 in (686 mm)	68 in (1727 mm)	440 lbs (200 kgs)
MDB 170	27 in (686 mm)	27 in (686mm)	68 in (1727mm)	475 lbs (216 kgs)
MDB 225	37 in (940mm)	37 in (940mm)	79 in (2006mm)	750 lbs (310 kgs)
MDB 380	37 in (940mm)	37 in (940mm)	87 in (2210mm)	850 lbs (386 kgs)



Specifications

Model	Process air flow, cfm (m3/hr.)	Hose conn. di., in. (mm)	Temp. range, °F (°C)	230/3/60		460/3/60		Process Blower, hp (kW)	Regen. blower, hp (kW)
				FLA	Running Amps	FLA	Running Amps		
85	50 (85)	2.5 (64)	140-400 (60-204)	24	19	12	10	0.75 (0.6)	0.33 (0.25)
170	100 (170)	2.5 (64)	140-400 (60-204)	38	30	19	15	1 (0.75)	0.33 (0.25)
255	150 (255)	3 (75)	160-400 (71-204)	61	49	31	25	4 (3)	0.5 (0.37)
380	225 (380)	3.5 (88)	160-400 (71-204)	88	70	44	36	5 (3.73)	0.5 (0.37)