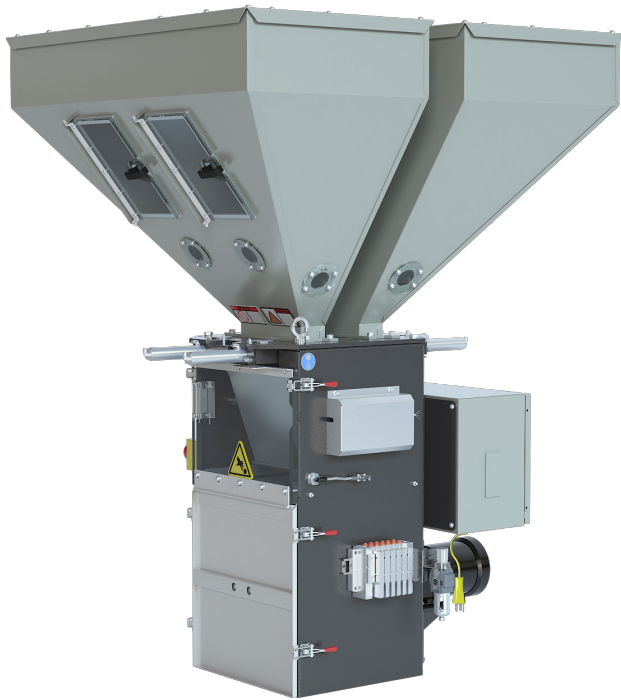


# BD SERIES

## Gravimetric Blender



## Technical Specifications

The BD Series batch weigh blenders are setting new industry standards for accuracy and homogeneous blend quality with quick-acting diamond slide gates, unmatched mixing performance, and an easy to use high resolution color touchscreen interface.

With 3 different ways to enter blend recipes, the BD Series blender is perfect for Injection Molding, Extrusion, Blow Molding or any other process. Combined with its easy to clean design, the BD series blender allows you to minimize material changes and maximize machine efficiency.

## Features

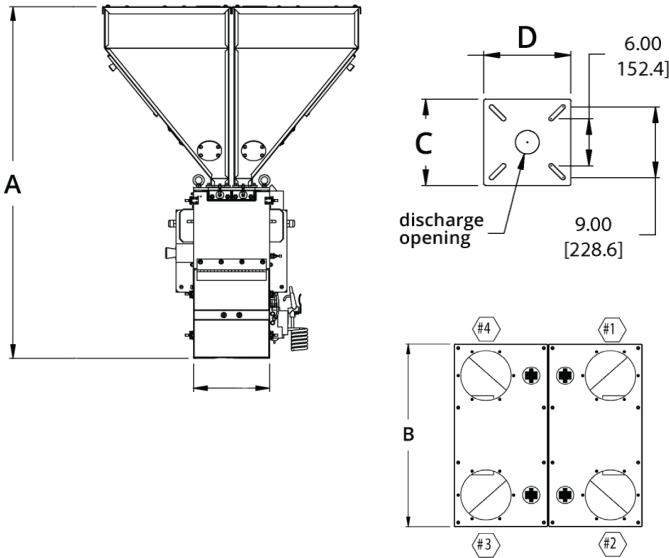
### Standard Features

- 7" High Resolution Color Touchscreen display and a powerful Allen Bradley Micro850 PLC.
- Unmatched mixing performance - new high efficiency paddle delivers the most consistent batch-to-batch mix in the industry.
- 100 recipe storage book
- Alarm light & audible alarm
- **3 Recipe Modes**
  1. Percentage recipe entry - Ingredients metered as a percentage of the batch.
  2. 8-component "EZ" mode recipe entry - Color and additives metered as a percentage of the virgin.
  3. "Parts" mode ratio recipe entry (i.e. 500:1)
- Precision metering with diamond slide gate design - dispense as few as 5 pellets per pulse
- Oversized square gate assembly for Re grind
- Precision 0.02% span accurate cantilever load cell weigh system
- Adjustable stroke limiters for all ingredients
- Interlocked safety system shuts off air and power if mix chamber is opened
- "H" models include two large hoppers with diamond gates and two removable hoppers with vertical gates
- 7th and 8th components include additive feeders or RAM feeders
- 115/1/60 or 220/1/50 - 60 supply voltage
- Remotely monitor or control via phone, tablet, or PC
- Seamlessly integrate with any smart factory
- E-mail alert capability

### Optional Features

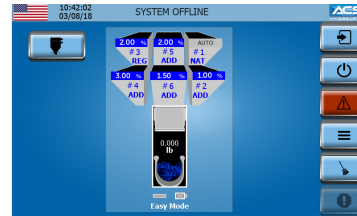
- Integrated 9-station loading control
- Low-level proximity sensor for each supply hopper
- Re grind Auger Metering (RAM) assembly with agitated straight wall hopper (model 900 and larger)
- Bowl shaped mixing chamber on BD-200
- Stainless steel supply hoppers
- Blender stands with air operated mixer discharge knife gate for gaylord or barrel filling
- Low-profile blender stand for mezzanine mounting
- Low-profile drawer-magnet
- Blender stand with mixer valve and surge hopper with integral take off stub or vacuum take off box mounting
- Aluminum spool with drain port
- Drain tube with slide gate on supply hopper
- Removable hoppers with integral metering gates
- Ethernet switch for remote communications

## Product Diagrams



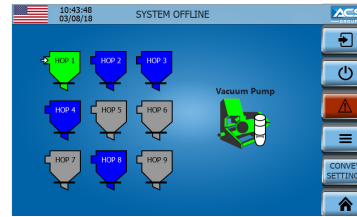
Model	A, in. (mm.)	B, in. (mm.)	C, D, in. (mm.)	Weight
200	41.5 (1054)	37.5 (952)	11x11 (280x280)	375 (170)
500	51.5 (1308)			
900	56.5 (1435)	37.0 (940)	14x15 (355x457)	450 (205)
2500	69.5 (1765)	45.5 (1156)	17x18 (432x453)	650 (295)
4000	85.5 (2172)	57.5 (1461)	22x24 (559x610)	1100 (500)
6000	89.5 (2337)			

## Advanced Controls



### Blender Home Screen

Visual representation of the entire blender system to quickly and easily see the current recipe, operation mode, and the weight of the current batch.



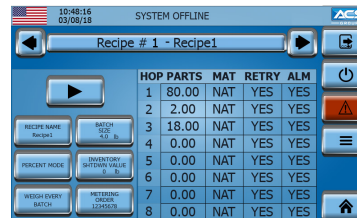
### 9 Station Loading Control (Optional)

Control a vacuum pump to load up to 8 hoppers and convey to a single process machine.



### Inventory Statistics

Quickly see the average batch time and current pounds per hour process rate to identify throughput targets.



### Recipe Book

Enter and store up to 100 unique recipes.

A3 is currently not compatible with BD Blenders controlled by Micro850 PLC

## Specifications

Model	Max. Blending Rate* lbs./hr. (kgs./hr.)	# of materials to be blended	Slide gate size, in. (mm.)		Supply hopper capacity		Weigh hopper cap., cu.ft (l)
			Majors	Minors	Majors	Minors	
200	200 (90)	2-4	2.0 (50)	1.5 (38)	0.7 (20)	0.2 (5)	0.18 (5.0)
500	500 (227)	2-6			1.4 (40)	1.0 (28)	
900	900 (410)	2-8	2.5 (63)	2.0 (50)	3.0 (85)	2.7 (77)	0.38 (11)
2500	2500 (1135)				7.5 (212)	6.0 (170)	0.82 (23)
4000	4000 (1815)				2.17 (61)		
6000	6000 (2725)						

\* Maximum blending rates based on running three components at 80% virgin pellets, 18% free-flowing regrind and 2% pelletized additive

Model	Typical batch size lbs. (kgs.)	Mixer			Load cell capacity kgs.	Discharge opening in. (mm.)
		Capacity cu.ft. (l)	Motor size HP (kW)	RPM		
200	4 (1.8)	0.25 (7)	1/6 (0.124)	21	2 @ 10 kgs.	3.0 (76.2)
500						
900	8 (3.6)	0.56 (16)	1/3 (0.25)	22	2 @ 10 kgs.	4.0 (102)
2500	25 (11.3)	1.1 (31)			2 @ 10 kgs.	
4000	35 (15.8)	2.72 (77)	1 (0.75)	2 @ 15 kgs.		
6000	45 (20.4)			2 @ 15 kgs.		