



VACTRAC™ 10/80 AND 24/128 CONTROL SYSTEMS

Vacuum conveying has never been more simple or versatile than with AEC's new VacTrac™ Series 10/80 and 24/128 Controller. The VacTrac 10/80 controller from AEC features enhanced graphics and control of up to 10 vacuum conveying pumps, 80 loading stations, and 80 purge valves. The VacTrac 24/128 controller from AEC features enhanced graphics and control of up to 24 vacuum conveying pumps, 128 loading stations and 128 purge valves. The 10/80 and 24/128 controllers utilize a DeviceNet distributed I/O network, and standard features include an Allen-Bradley CompactLogix controller with a 10" color touch-screen operator interface.



ONE TOUCH. TWO CABLES. TOTAL CONTROL.

The ArmorBlock distributed I/O modules and KwikLink flat wiring are compatible with DeviceNet communications. The network approach reduces

installation costs by minimizing wire runs, and allows for easy expansion and "hot-swapping" of components, eliminating costly downtime.

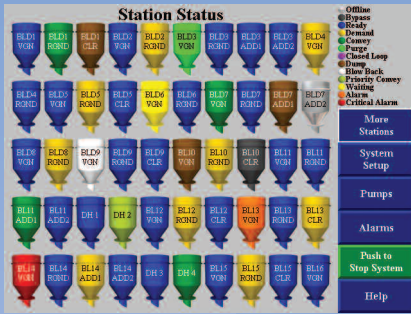
STANDARD FEATURES

- Time fill loading
- Prioritized station loading
- Manifold line sharing
- Built-in system diagnostics
- Add new equipment and/or equipment options without shutting down the system
- Optimized for blender applications
- 1 optional I/O per hopper (24/128)
- Up to 3 optional I/O per hopper (10/80)

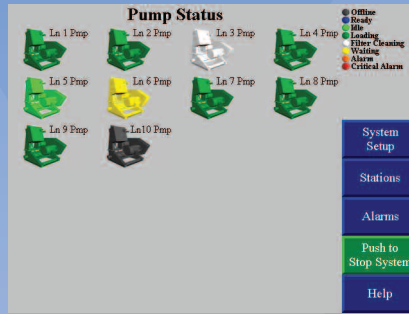
OPTIONAL FEATURES

- Additional touch-screen operator interfaces for multi-location access within the plant
- Multiple vacuum pump and filter cleaning options
- Line purging capability
- Closed loop conveying
- Local station On/Off control
- Centralized remote proportioning valve control
- Blowback filter cleaning at the loading station
- Vacuum receiver positive discharge
- Volume-fill of vacuum receiver
- Low-level indication in supply hoppers
- Local and/or centralized alarms
- Ethernet capabilities
- Supply power noise filter surge/suppressor
- Granulator unloading

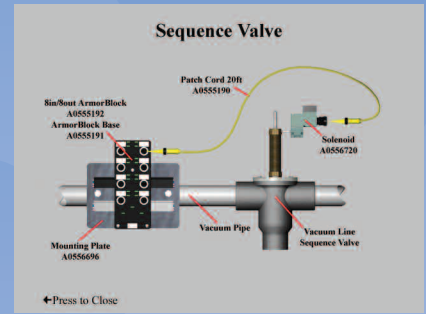




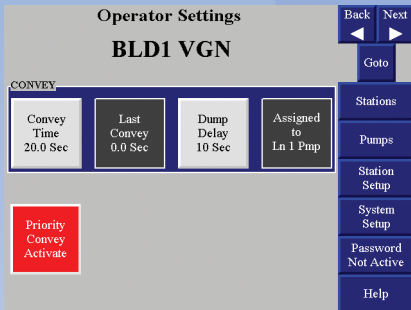
Naming of loading stations, pumps, purge valves and material sources



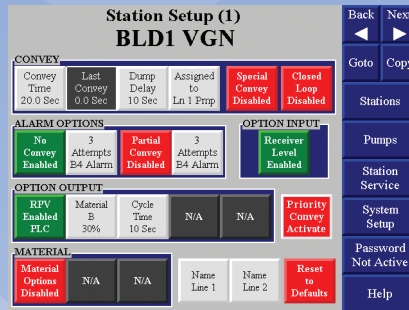
Pump Status



Built-in diagnostics, operating instructions and installation instructions



Operator Screen



Set-up Screen



Spare Parts Screen

The sample VTC10/80 and 24/128 screens above show how versatile this control platform is. Easy to follow graphical touch-screens provide total navigational control of this central vacuum system.

www.aecinternet.com
aecweb@corpemail.com

AEC is committed to a continuing program of product improvement. Specifications, appearances and dimensions are subject to change without notice.
 © 2011 AEC Bulletin WH2-120.3 Printed in USA



VACTRAC™ VTC 10/80 AND 24/128 CONTROLS



Global Headquarters:

AEC Schaumburg
 1100 E. Woodfield Rd #588
 Schaumburg, IL 60173
 Tel: +1 847 273 7700
 Fax: +1 847 273 7804

AEC New Berlin
 2900 S. 160th Street
 New Berlin, WI 53151
 Tel: +1 262 641 8610
 Fax: +1 262 641 8653



AEC Suzhou
 109 Xingpu Road SIP
 Suzhou, China 215126
 Tel: +86 512 8717 1919
 Fax: +86 512 8717 1916



AEC Warsaw
 ul.Dziakowa 115
 02-234 Warszawa
 Tel: + 48 22 390 9720
 Fax: + 48 22 390 9724



AEC India
 Regus, Level 2, Connaught Place
 Bund Garden Road, Pune 41100,
 India
 Tel: +91 20 4014 7575/40147615
 Fax: +91 93 7115 4045