



**ACM30F Floor
Model Dryer**



**ACM30/3.0
Machine
Mount Dryer
with Hopper**

AC AND ACM COMPRESSED AIR DRYERS

AEC's AC and ACM Compressed Air Dryers offer compact size with full performance. The standard model reduces dewpoint of compressed air supply by 50°F, and can achieve a dewpoint of 0°F or as low as -10°F if the plant air compressor is equipped with a refrigerated air dryer. The membrane option maintains -40° dewpoint in all environments without a dryer on the compressor. (120° F maximum compressed air supply temperature.)

STANDARD FEATURES

- Standard temperature range: 110°F to 300°F
High temperature range: 110°F to 400°F
- Compact size with full size performance
- Easy-to-use off-the-shelf microprocessor control provides digital temperature control up to 300°F (400°F high temperature option available)
- Control system complies with NFPA79, UL and CUL for maximum safety, including electrical disconnect and branch fusing
- Standard model (AC Series, no membrane unit) reduces dew point of compressed air supply by 50°F
- Membrane option (ACM Series) maintains -40° dewpoint in all environments
- Cabinet style design for maximum safety
- Instant -40°F dewpoint with ACM dryers
- No temperature spikes, no regeneration or process blowers, no desiccant, no regeneration heaters, no moving parts
- Stainless steel heater boxes
- High-efficiency 0.01 micron filter assembly (no contamination, can be mounted inside clean room)
- Safety switch and alarm to monitor air supply
- 30 and 60 CFM models available (50 and 100 m³/hr)
- Premium quality Incoloy® low watt density heaters for dependable service
- CE models available
- 460/3/60 supply voltage—others available





The dryer is available mounted on a portable cart for additional convenience.

STANDARD FEATURES

- Off-the-shelf 1/16 DIN temperature controller
- Programmable relay (PRC) based control system
- Enclosure meets NFPA 79, UL and CUL electrical standards
- Non-fused disconnect
- High process temperature alarm light

OPTIONAL FEATURES

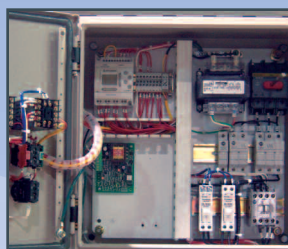
- Audible alarm with silence button
- Digital dewpoint monitor -40°F
- Casters
- High temperature (400°F) package
- Dew point monitor
- CE models available
- Portable cart

MACHINE MOUNT MODELS INCLUDE

- 1.7, 3.0, 4.0 or 6.0 cu. ft. (50, 85, 110, or 170 liter) stainless steel drying hopper
- Machine mount adapter with drain
- Interconnecting hose and clamps

FLOOR MOUNT MODELS INCLUDE

- 12' high-temperature silicone hose and clamps for process air
- Rubber feet



All AC and ACM control systems include an electrical disconnect and branch fusing for maximum safety.



The microprocessor controller features digital temperature control.

www.aecinternet.com
aecweb@corpemail.com

AEC is committed to a continuing program of product improvement. Specifications, appearances and dimensions are subject to change without notice.
© 2011 AEC Bulletin WH1-150.4 Printed in USA



AC AND ACM COMPRESSED AIR DRYERS



Global Headquarters:

AEC Schaumburg
1100 E. Woodfield Rd #588
Schaumburg, IL 60173
Tel: +1 847 273 7700
Fax: +1 847 273 7804

AEC New Berlin
2900 S. 160th Street
New Berlin, WI 53151
Tel: +1 262 641 8610
Fax: +1 262 641 8653



AEC Suzhou
109 Xingpu Road SIP
Suzhou, China 215126
Tel: +86 512 8717 1919
Fax: +86 512 8717 1916



AEC Warsaw
ul.Dziakowa 115
02-234 Warszawa
Tel: + 48 22 390 9720
Fax: + 48 22 390 9724



AEC India
Regus, Level 2, Connaught Place
Bund Garden Road, Pune 41100,
India
Tel: +91 20 4014 7575/40147615
Fax: +91 93 7115 4045